



**Noise Monitoring Result**

**Day Time (0700 - 1900hrs on normal weekdays)**

Location: M1a - Footbridge at EX-Wanchai Harbour Road Sports Centre

Date	Time	Weather	Measurement Noise Level			Baseline Level	Construction Noise Level	Limit Level
			Leq	L10	L90	Leq	Leq	Leq
Unit: dB(A), (30-min)								
3/4/18	9:50	Fine	72.2	74.4	69.1	72	72	75
10/4/18	15:23	Fine	73.3	75.1	70.5	72	67	75
18/4/18	10:44	Fine	73.7	75.9	69.4	72	68	75
24/4/18	13:16	Cloudy	74.5	76.8	70.6	72	71	75



**Noise Monitoring Result**

**Day Time (0700 - 1900hrs on normal weekdays)**

Location: M2b - Noon-day gun area

Date	Time	Weather	Measurement Noise Level			Baseline Level	Construction Noise Level	Limit Level
			Leq	L10	L90	Leq	Leq	Leq
Unit: dB(A), (30-min)								
3/4/18	10:35	Fine	67.6	68.7	64.3	68	68	75
12/4/18	10:39	Fine	69.7	72.4	64.8	68	66	75
19/4/18	13:11	Fine	68.8	72.0	64.7	68	63	75
24/4/18	13:56	Cloudy	67.3	68.8	65.2	68	67	75

Location: M3a - Tung Lo Wan Fire Station

Date	Time	Weather	Measurement Noise Level			Baseline Level	Construction Noise Level	Limit Level
			Leq	L10	L90	Leq	Leq	Leq
Unit: dB(A), (30-min)								
3/4/18	15:20	Fine	65.2	66.4	63.7	69	65	75
11/4/18	08:50	Fine	64.3	66.2	62.0	69	64	75
19/4/18	9:55	Fine	65.1	66.7	62.9	69	65	75
24/4/18	10:04	Cloudy	64.8	66.3	62.6	69	65	75



**Noise Monitoring Result**

**Day Time (0700 - 1900hrs on normal weekdays)**

Location: M4b - Victoria Centre

Date	Time	Weather	Measurement Noise Level			Baseline Noise Level	Construction Noise Level	Limit Level
			Leq	L10	L90	Leq	Leq	Leq
Unit: dB(A), (30min)								
6/4/18	9:35	Fine	65.2	67.2	62.8	67	65	75
10/4/18	16:05	Fine	66.8	69.0	63.8	67	67	75
19/4/18	10:34	Fine	66.7	68.5	64.3	67	67	75
24/4/18	9:20	Cloudy	66.5	69.0	63.0	67	67	75

Location: M5b - City Garden

Date	Time	Weather	Measurement Noise Level			Baseline Level	Construction Noise Level	Limit Level
			Leq	L10	L90	Leq	Leq	Leq
Unit: dB(A), (30min)								
6/4/18	9:40	Fine	73.1	74.4	71.0	68	71	75
11/4/18	09:36	Fine	70.2	72.6	66.0	68	66	75
19/4/18	11:17	Fine	68.6	70.0	66.6	68	60	75
24/4/18	14:36	Cloudy	73.2	74.4	69.9	68	72	75

Location: M6 - HK Baptist Church Henrietta Secondary School

Date	Time	Weather	Measurement Noise Level			Baseline Level	Construction Noise Level	Limit Level
			Leq	L10	L90	Leq	Leq	Leq
Unit: dB(A), (30-min)								
6/4/18	10:20	Fine	67.9	69.2	66.5	71	68	70
11/4/18	10:15	Fine	67.5	68.8	65.2	71	68	70
19/4/18	14:06	Fine	67.9	69.1	66.4	71	68	70
25/4/18	15:50	Cloudy	64.7	66.2	62.7	71	65	65



### Noise Monitoring Result

#### Day Time (0700 - 1900hrs on normal weekdays)

Location: M7e - International Finance Centre (Eastern End of Podium) (Reference Station)

Date	Time	Weather	Measurement Noise Level			Baseline Level	Construction Noise Level	Limit Level
			Leq	L10	L90	Leq	Leq	Leq
Unit: dB(A), (30-min)								
3/4/18	13:45	Fine	65.2	66.6	62.0	67	65	N/A
9/4/18	10:50	Fine	67.7	69.0	65.2	67	60	N/A
17/4/18	10:42	Cloudy	66.5	68.0	63.5	67	67	N/A
23/4/18	13:32	Fine	65.7	67.4	63.0	67	66	N/A

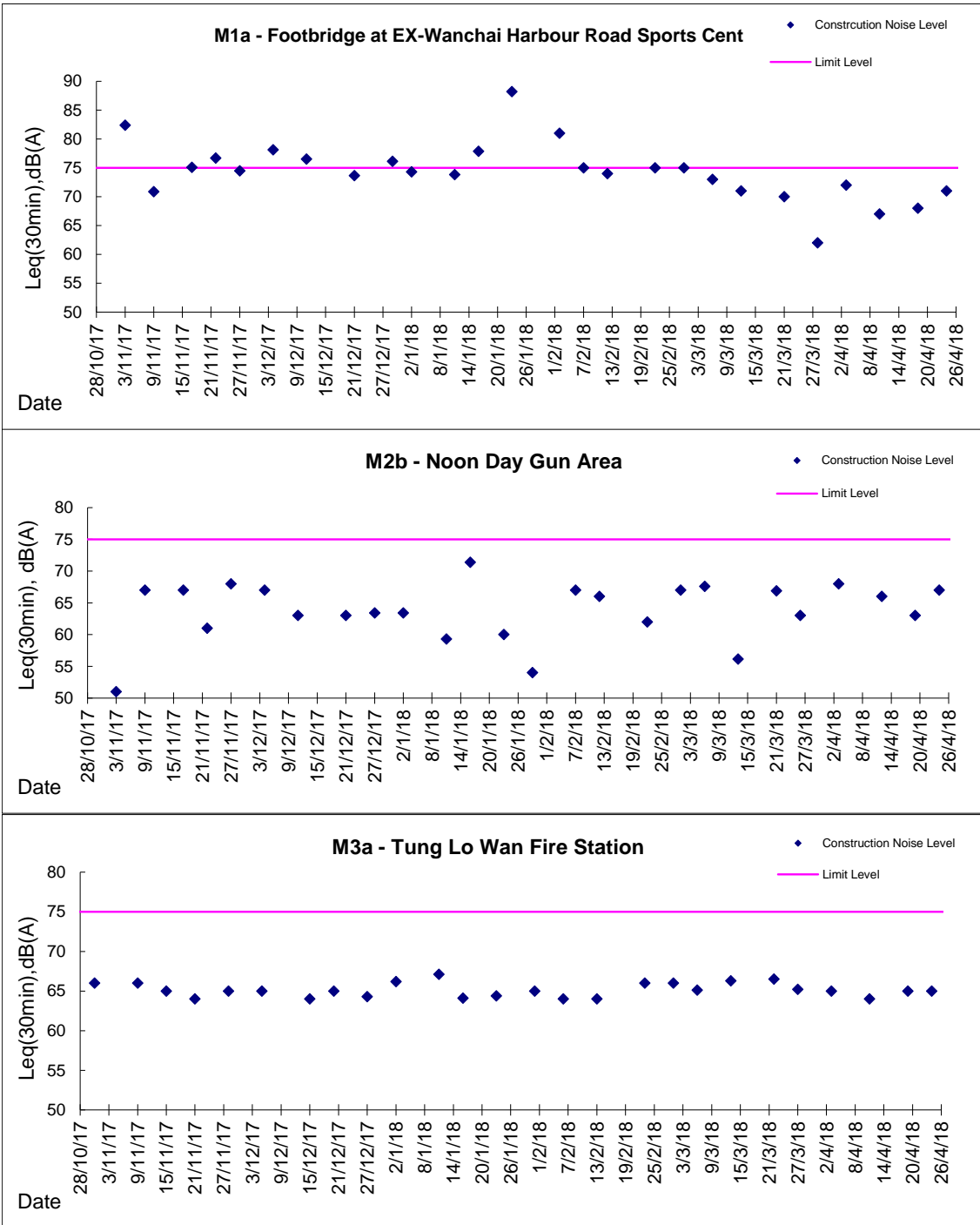
Location: M7w - International Finance Centre (Western End of Podium)

Date	Time	Weather	Measurement Noise Level			Baseline Level	Construction Noise Level	Limit Level
			Leq	L10	L90	Leq	Leq	Leq
Unit: dB(A), (30-min)								
3/4/18	13:10	Fine	64.9	66.0	62.6	69	65	75
9/4/18	11:25	Fine	65.7	68.3	63.7	69	66	75
17/4/18	10:05	Cloudy	65.0	66.6	62.5	69	65	75
23/4/18	14:10	Fine	65.2	66.9	62.6	69	65	75

Location: M8 - City Hall

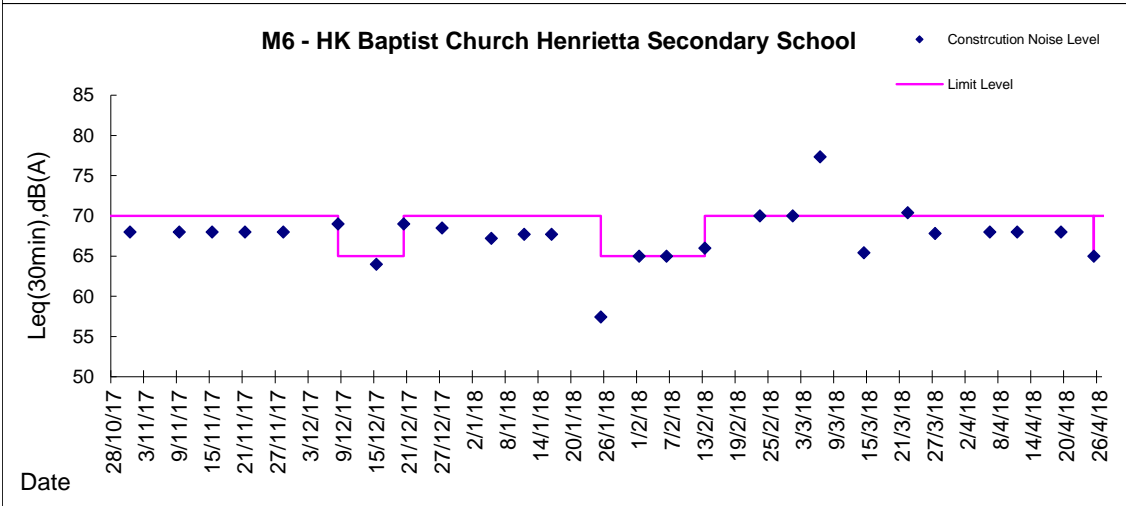
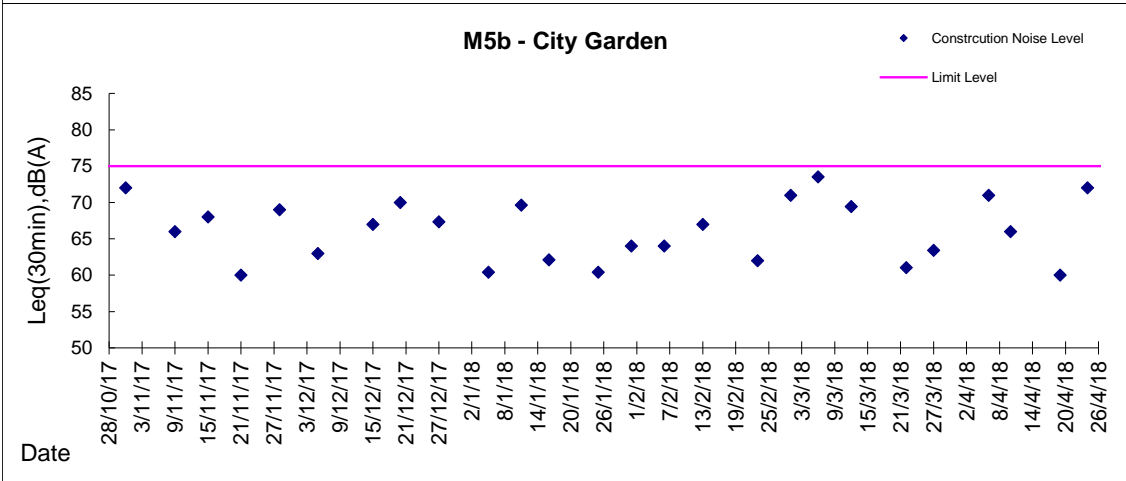
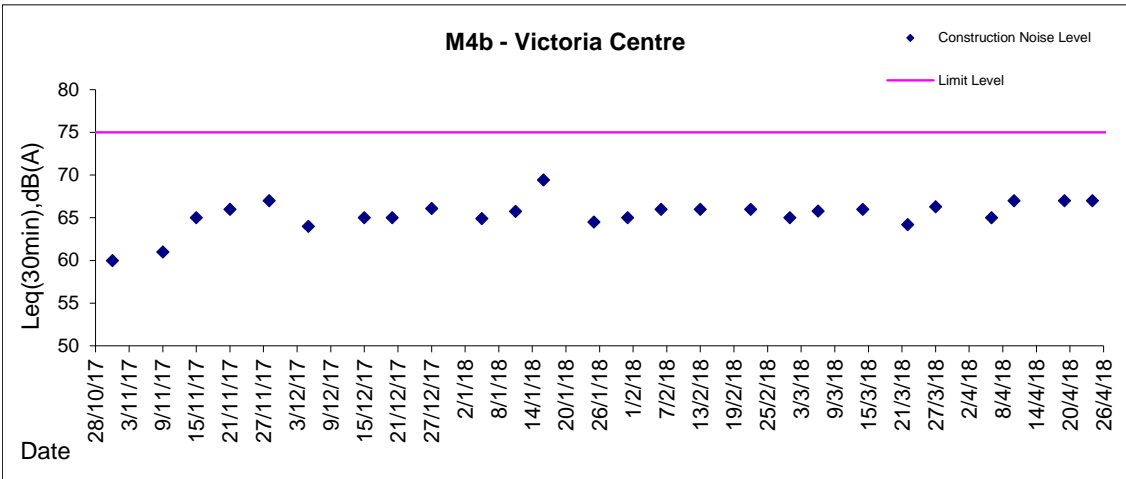
Date	Time	Weather	Measurement Noise Level			Baseline Level	Construction Noise Level	Limit Level
			Leq	L10	L90	Leq	Leq	Leq
Unit: dB(A), (30-min)								
3/4/18	14:30	Fine	57.8	60.1	55.0	64	58	70
12/4/18	09:36	Fine	61.5	63.9	57.1	64	62	70
17/4/18	11:30	Cloudy	62.5	63.7	56.9	64	63	70
23/4/18	15:05	Fine	61.5	63.4	58.7	64	62	70

**Graphic Presentation of Noise Monitoring Result**  
**Day Time (0700 - 1900hrs on normal weekdays)**





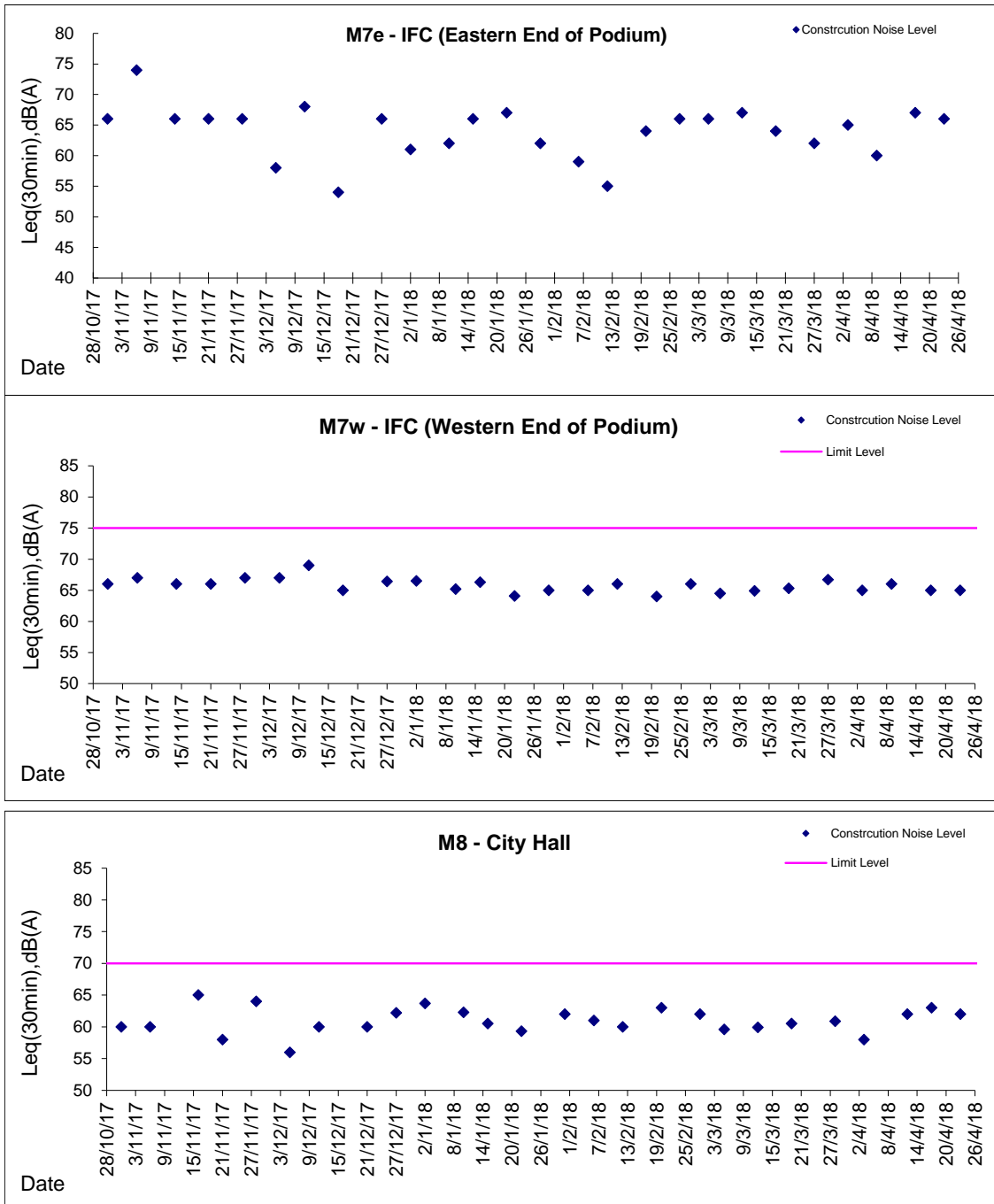
**Graphic Presentation of Noise Monitoring Result**  
**Day Time (0700 - 1900hrs on normal weekdays)**





**Graphic Presentation of Noise Monitoring Result**

**Day Time (0700 - 1900hrs on normal weekdays)**



\* Remark: M7e - IFC (Eastern End of Podium) is a reference monitoring station